

Pitch:1.00mm(0.039")

Pin Header Single Row Right Angle Dip Type

QCB110 Series

Technical Data

Material:

Contact material: Brass

Insulator material:Black polyester UL94V-0

Standard:PA46+30%G.F

Electrical:

Current rating: 0.75Amps/contact max.

Contact resistance:  $\leq 20\text{m}\Omega$ /contact

Insulation resistance:  $\geq 1000\text{M}\Omega$  at V=100V

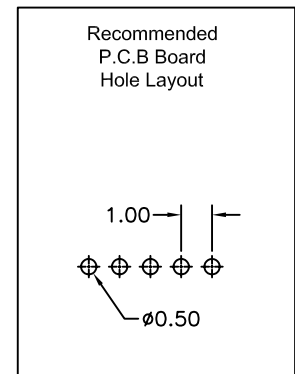
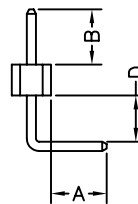
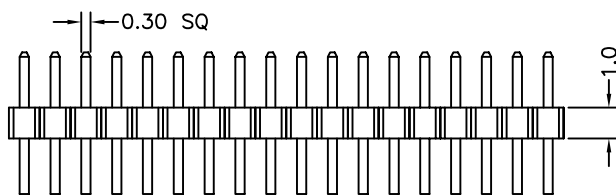
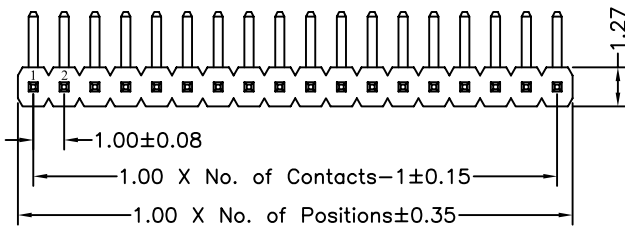
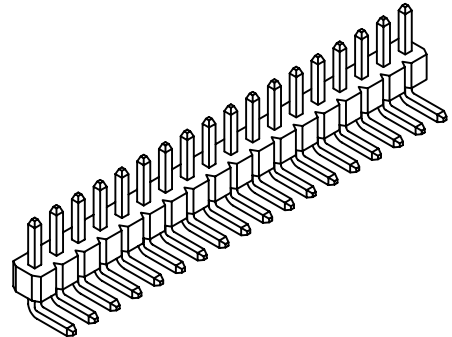
Withstanding voltage:300V AC/minute

Mechanical:

Operating temperatures: Gold plated:-55° C to+105° C

Tin plated:-40° C to+105° C

Soldering temperature: +260° C,10s max.



<b>QCB1101</b>	-	<b>P</b>	<b>XX</b>	<b>X</b>	<b>X</b>	<b>A</b>	<b>XX</b>
		No. of Positions 01 to 100	Plating Option A G/F B Au3μ" C Au5μ" D Au10μ" E Au15μ" S Special		Insulator Material Option A BK-PBT B BK-PA66 C BK-PA6T D BK-PA46 F BK-LCP S Special		Pin Length (A/B/D) 01-99