

Pitch: 1.00*1.00mm(0.039*0.039")

Pin Header Dual Row Right Angle Dip Type

QCB2XX Series

Technical Data

Material:

Contact material: Brass

Insulator material: Black polyester UL94V-0

Standard: PA46+30%G.F

Electrical:

Current rating: 0.75Amps/contact max.

Contact resistance: $\leq 20m\Omega$ /contact

Insulation resistance: $\geq 1000M\Omega$ at V=100V

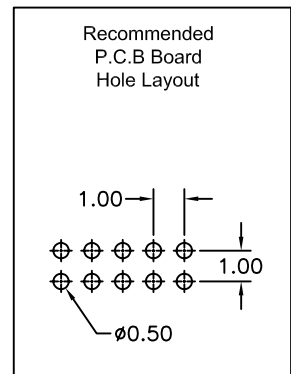
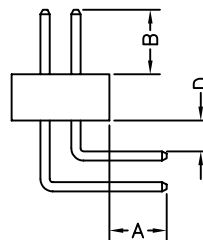
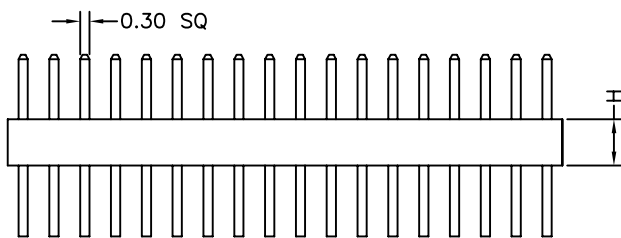
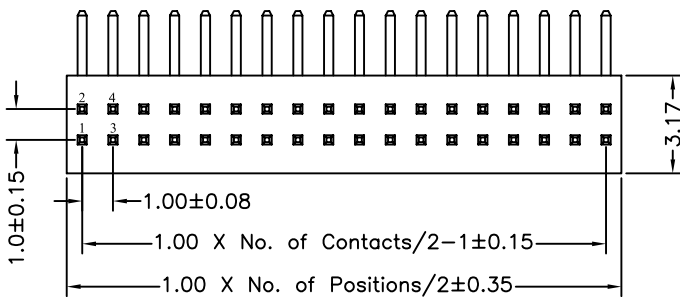
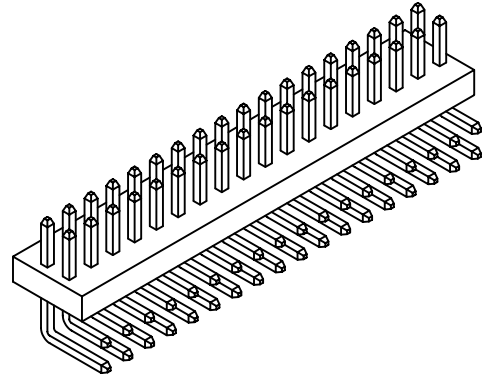
Withstanding voltage: 300V AC/minute

Mechanical:

Operating temperatures: Gold plated: -55° C to +105° C

Tin plated: -40° C to +105° C

Soldering temperature: +260° C, 10s max.



QCB2	XX	1 - P	XX	X	X	A	XX
	High Option 10 H=1.0mm 15 H=1.5mm		No. of Positions 02 to 100	Plating Option A G/F B Au3μ" C Au5μ" D Au10μ" E Au15μ" S Special	Insulator Material Option A BK-PBT B BK-PA66 C BK-PA6T D BK-PA46 F BK-LCP S Special		Pin Length (A/B/D) 01-99