

Pitch:2.54mm(0.1")

Pin Header Single Row Straight Dip Type

QHA1XX Series

Technical Data

Material:

Contact material: Brass

Insulator material:Black polyester UL94V-0

Standard:PBT+30%G.F

Electrical:

Current rating: 3Amps/contact max.

Contact resistance:  $\leq 20\mu\Omega$ /contact

Insulation resistance:  $\geq 1000M\Omega$  at V=100V

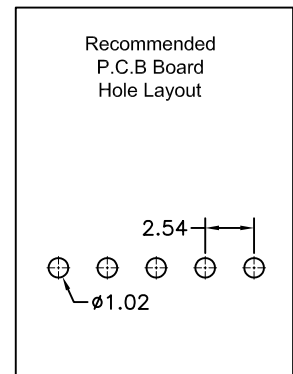
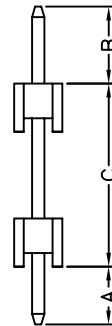
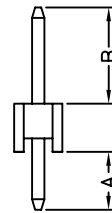
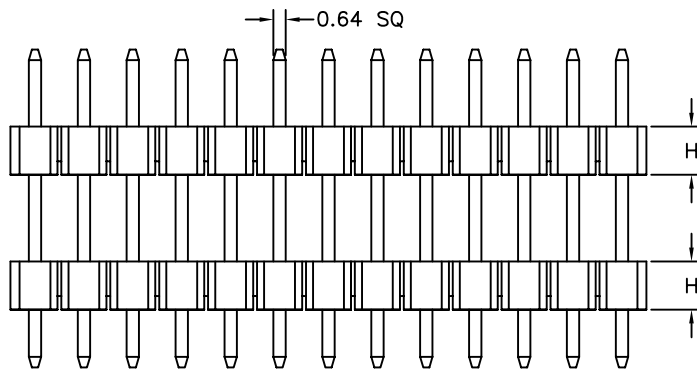
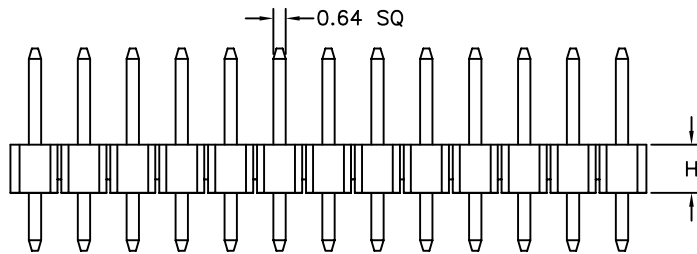
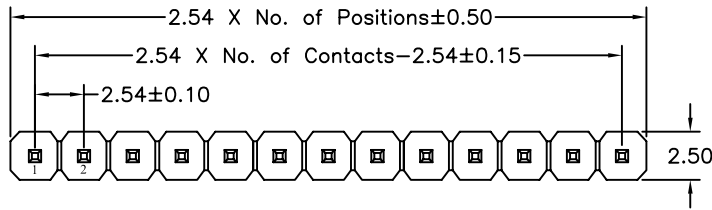
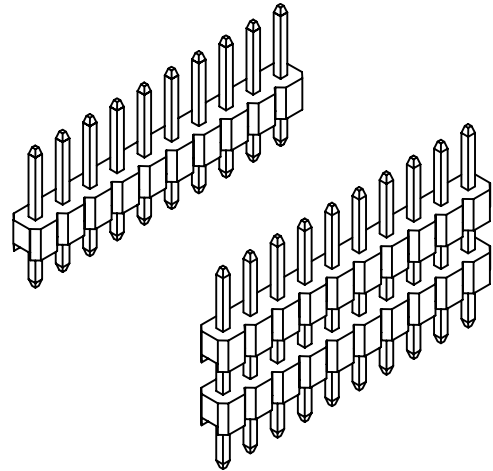
Withstanding voltage:550V AC/minute

Mechanical:

Operating temperatures: Gold plated:-55° C to+105° C

Tin plated:-40° C to+105° C

Soldering temperature: +220° C,10s max.



|             |   |   |   |          |                              |  |   |          |                             |
|-------------|---|---|---|----------|------------------------------|--|---|----------|-----------------------------|
| <b>QHA1</b> | <b>XX</b>   | <b>X</b>  | - | <b>P</b> | <b>XX</b>                    | <b>X</b>   | <b>X</b>  | <b>A</b> | <b>XX</b>                   |
|             | High Option<br>15 H=1.5mm<br>17 H=1.7mm<br>20 H=2.0mm<br>25 H=2.5mm | Insulator Quantity<br>1 1PCS<br>2 2PCS<br>3 3PCS<br>S Special |   |          | No. of Positions<br>01 to 40 | Plating Option<br>A G/F<br>B Au3μ"<br>C Au5μ"<br>D Au10μ"<br>E Au15μ"<br>S Special | Insulator Material Option<br>A BK-PBT<br>B BK-PA66<br>C BK-PA6T<br>D BK-PA46<br>F BK-LCP<br>S Special |          | Pin Length (A/B/C)<br>01-99 |