

Pitch:2.00mm(0.0787")

Pin Header Single Row Right Angle Dip Type

QFB1XX Series

**Technical Data**

**Material:**

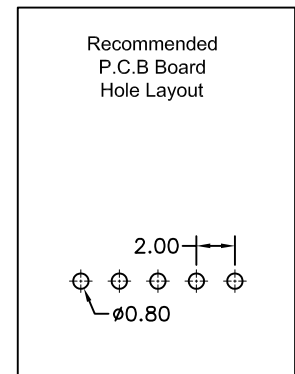
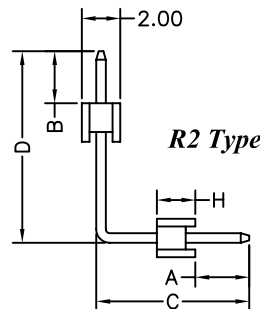
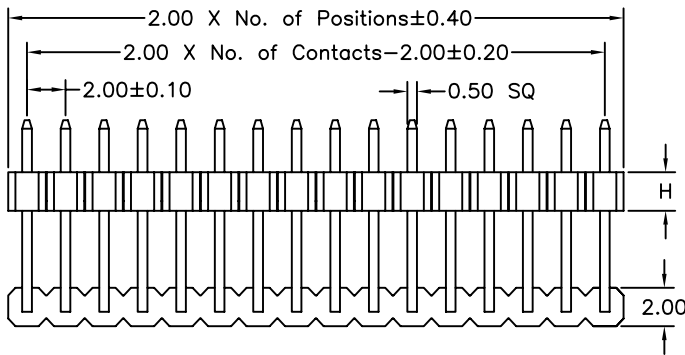
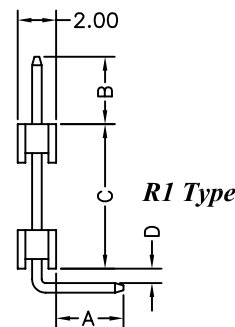
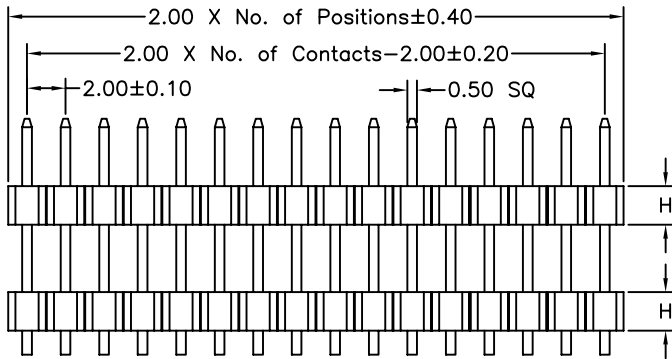
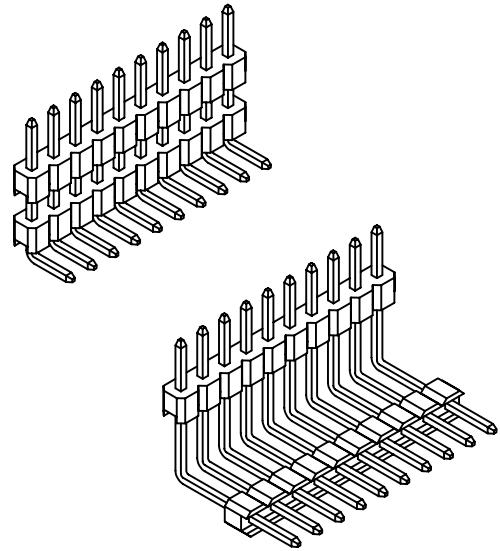
Contact material: Brass  
 Insulator material:Black polyester UL94V-0  
 Standard:PBT+30%G.F

**Electrical:**

Current rating: 1.5Amps/contact max.  
 Contact resistance:  $\leq 20m\Omega$ /contact  
 Insulation resistance:  $\geq 1000M\Omega$  at V=100V  
 Withstanding voltage:450V AC/minute

**Mechanical:**

Operating temperatures: Gold plated:-55° C to+105° C  
 Tin plated:-40° C to+105° C  
 Soldering temperature: +220° C,10s max.



<b>QFB1</b>	<b>XX</b>	<b>2</b> - <b>P</b>	<b>XX</b>	<b>X</b>	<b>X</b>	<b>X</b>	<b>XX</b>
	High Option 15 H=1.5mm 20 H=2.0mm	No. of Positions 01 to 40	Plating Option A G/F B Au3μ" C Au5μ" D Au10μ" E Au15μ" S Special	Insulator Material Option A BK-PBT B BK-PA66 C BK-PA6T D BK-PA46 F BK-LCP S Special	Reflexed Type Option A R1 Type B R2 Type	Pin Length (A/B/C/D) 01~99	