

Pitch:2.00\*2.00mm(0.0787"\*0.0787")

Pin Header Dual Row Straight Dip Type

QFA240 Series

Technical Data

Material:

Contact material: Brass

Insulator material:Black polyester UL94V-0

Standard:PBT+30%G.F

Electrical:

Current rating: 1.5Amps/contact max.

Contact resistance:  $\leq 20m\Omega$ /contact

Insulation resistance:  $\geq 1000M\Omega$  at V=100V

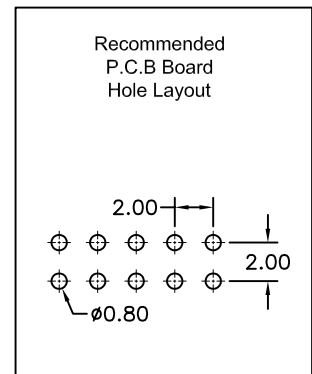
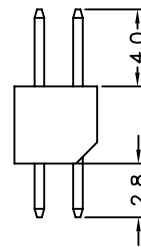
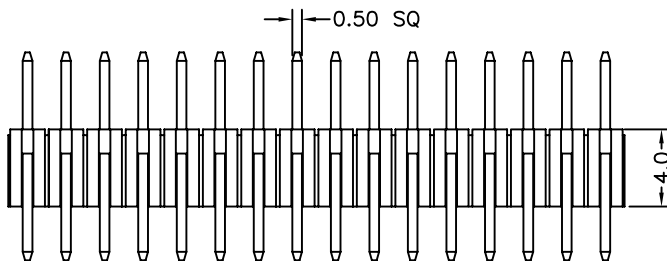
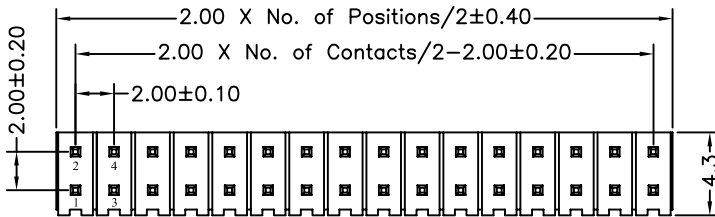
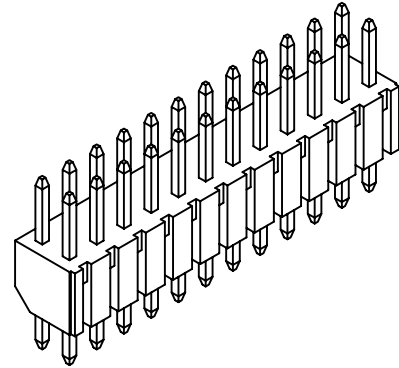
Withstanding voltage:450V AC/minute

Mechanical:

Operating temperatures: Gold plated:-55° C to+105° C

Tin plated:-40° C to+105° C

Soldering temperature: +220° C,10s max.



<b>QFA2401</b>	- <b>P</b>	<b>XX</b>	<b>X</b>	<b>X</b>	<b>A</b>	<b>XX</b>
No. of Positions 04 to 80		Plating Option A G/F B Au3μ" C Au5μ" D Au10μ" E Au15μ" S Special		Insulator Material Option A BK-PBT B BK-PA66 C BK-PA6T D BK-PA46 F BK-LCP S Special		Pin Length 01-99