

Pitch:2.54mm(0.1")

# Female Header Dual Row Bottom Entry

# FHE250 Series

## Technical Data

### Material:

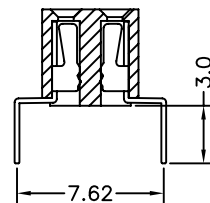
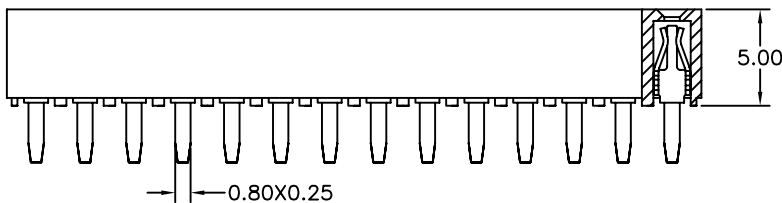
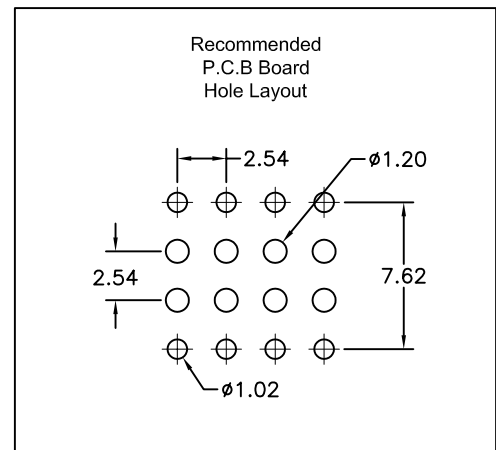
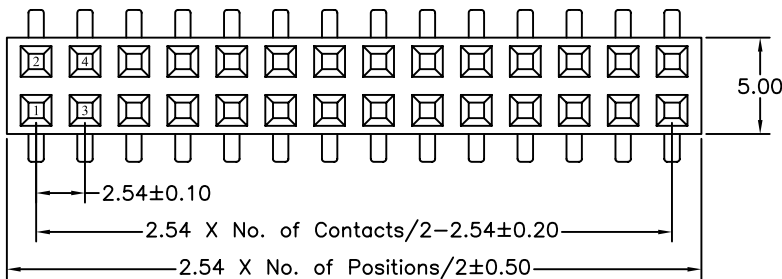
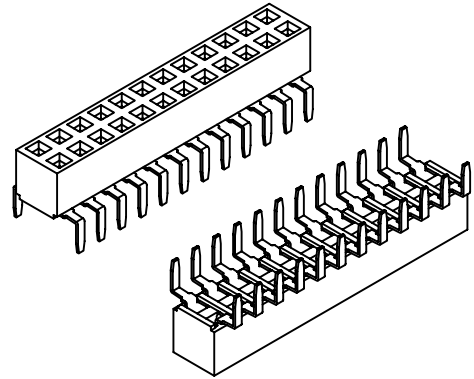
Contact material: Phosphor bronze  
 Insulator material:Black polyester UL94V-0  
 Standard:PA6T+30%G.F

### Electrical:

Current rating: 3Amps/contact max.  
 Contact resistance:  $\leq 20m\Omega$ /contact  
 Insulation resistance:  $\geq 1000M\Omega$  at V=100V  
 Withstanding voltage:550V AC/minute

### Mechanical:

Operating temperatures: Gold plated:-55° C to+105° C  
 Tin plated:-40° C to+105° C  
 Soldering temperature: +260° C,10s max.



**FHE2500** - **U** **XX** **X** **X** **A** **XX**

No. of Positions  
04 to 80

Plating Option  
 A G/F  
 B Au3 $\mu$ "  
 C Au5 $\mu$ "  
 D Au10 $\mu$ "  
 E Au15 $\mu$ "  
 S Special

Insulator Material Option  
 A BK-PBT  
 B BK-PA66  
 C BK-PA6T  
 D BK-PA46  
 F BK-LCP  
 S Special

Pin Length  
01-99