

Pitch: 1.27\*1.27mm(0.05"\*0.05")

Pin Header Dual Row Right Angle Dip Type

QEB2XX Series

**Technical Data**

Material:

Contact material: Brass

Insulator material: Black polyester UL94V-0

Standard: PA46+30%G.F

Electrical:

Current rating: 1.0Amps/contact max.

Contact resistance:  $\leq 20\text{m}\Omega/\text{contact}$

Insulation resistance:  $\geq 1000\text{M}\Omega$  at  $V=100\text{V}$

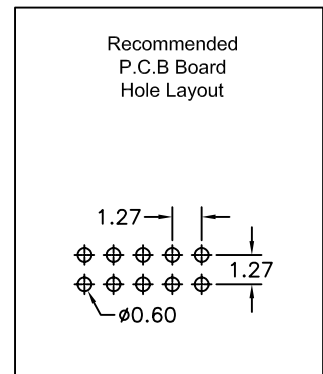
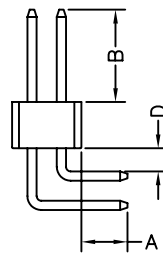
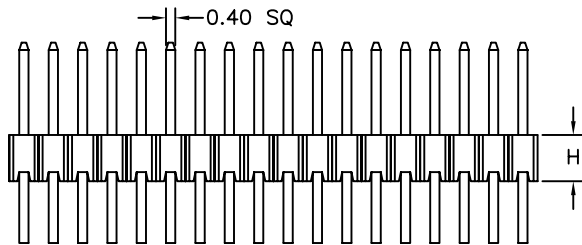
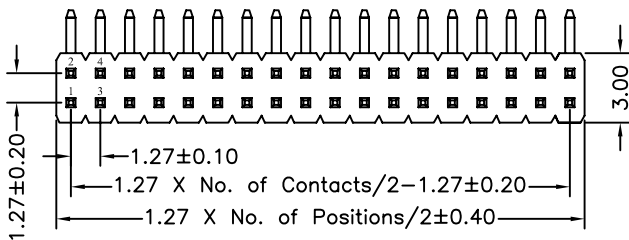
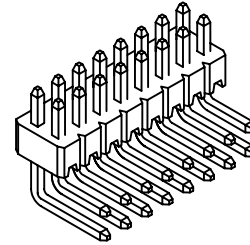
Withstanding voltage: 300V AC/minute

Mechanical:

Operating temperatures: Gold plated:  $-55^\circ\text{C}$  to  $+105^\circ\text{C}$

Tin plated:  $-40^\circ\text{C}$  to  $+105^\circ\text{C}$

Soldering temperature:  $+260^\circ\text{C}$ , 10s max.



<b>QEB2</b>	<b>XX</b>	<b>1</b> - <b>P</b>	<b>XX</b>	<b>X</b>	<b>X</b>	<b>A</b>	<b>XX</b>
	High Option 16 H=1.6mm 20 H=2.0mm 25 H=2.5mm	No. of Positions 04 to 100	Plating Option A G/F B Au3μ" C Au5μ" D Au10μ" E Au15μ" S Special	Insulator Material Option A BK-PBT B BK-PA66 C BK-PA6T D BK-PA46 F BK-LCP S Special	Pin Length (A/B/D) 01-99		