

# 2.54mm(0.1")DIN 41612 Dual Row Right Angle Female

**Material:**

Cotacts : Phosphor Bronze

Housing : 30% Glass filled PBT UL94V-0.

**Electrical Characteristics:**

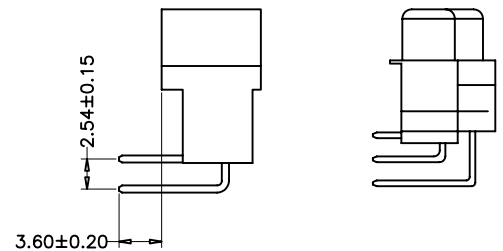
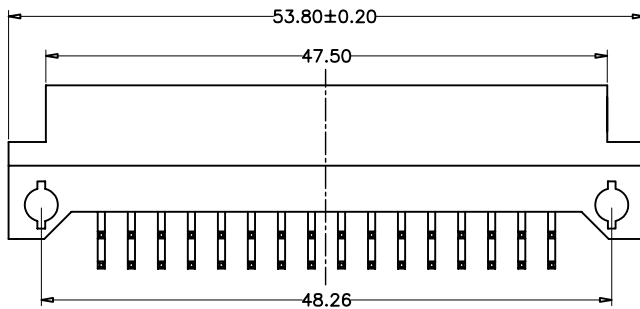
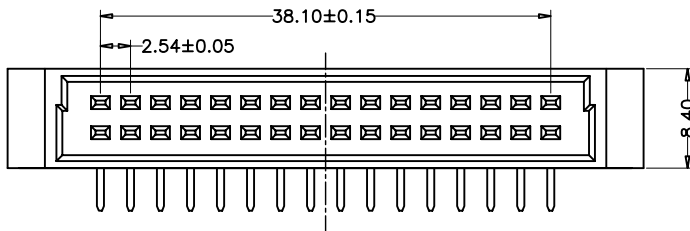
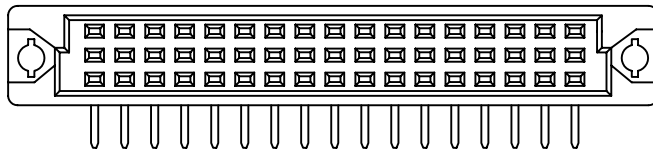
current Rating : 2AMP

Dielectric Withstanding Voltage :AC 1000V For 1 minute

Insulator Resistance : 1000MΩ min. at DC 500v

Contact Resistance : 30mΩ max. at DC 100mA

Operating Temperature : -55°C--+105°C



How to order the Part No. (Please replace "X" with appropriate coding listed in the tables below.)

D 41612

X

X

XX

--

XX

XX

-

XX

Pitch  
B 2.54mm

Versions  
A 180°  
B 90°

Pin NO  
02 2Pin  
05 5Pin

Contact Plating  
01 Tin  
02 Gold Flash  
03 Gold/Tin

Type Option  
A Open Type  
B Close Type

Glide NO  
01-99