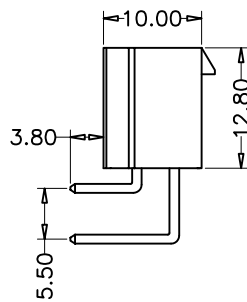
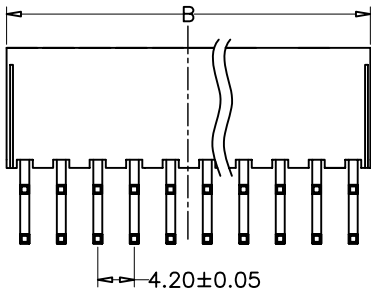
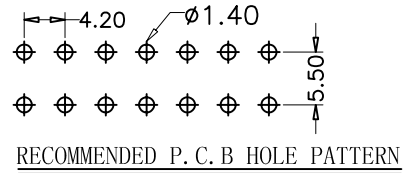
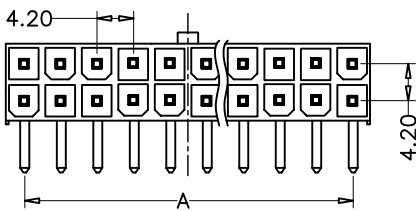


4.20mm(0.165") ATX Dual Row Right Angle

SPECIFICATIONS

Current Rating: 7A AC DC
 Voltage Rating: 250V AC DC
 Insulator Resistance: 1000 Megohms min.
 Withstand Voltage : AC 1500V/min.
 Operating Temp. : -25°C ~ +85°C
 Insulator Material: PA-66 (UL94V-2) ROHS
 Contact Material: Brass
 Plated(*Standard): Tin Plated



PIN NO.	Dimension (mm)	
	A	B
2*1P		5.40
2*2P	4.20	9.60
2*3P	8.40	13.80
2*4P	12.60	18.00
2*5P	16.80	22.20
2*6P	21.00	26.40
2*7P	25.20	30.60
2*8P	29.40	34.80
2*9P	33.60	39.00
2*10P	37.80	43.50
2*11P	42.00	47.40
2*12P	46.20	51.60

How to order the Part No. (Please replace "X" with appropriate coding listed in the tables below.)

ATX	X	X	XX	--	X	XX	--	XX			
Connector Pitch F 4.20mm H 3.00mm		Pin NO W Pole N No Pole		Pin NO 06 to 64		Housing Colour 01 Black 02 Blue 03 Green 04 Yellow		Contact Plating 01 Tin 02 Gold Flash 03 Gold/Tin		Glide NO 01-99	