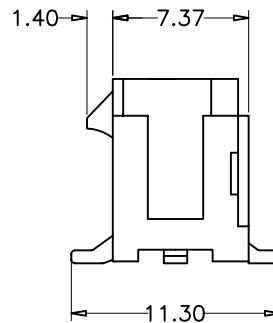
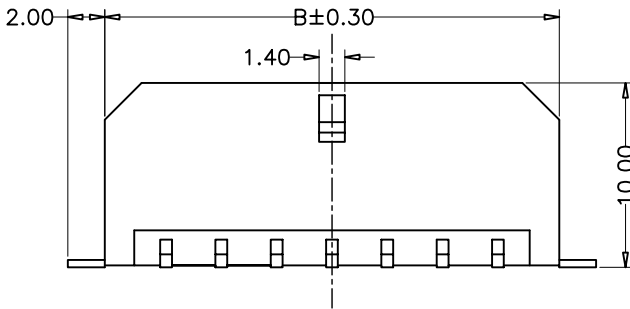
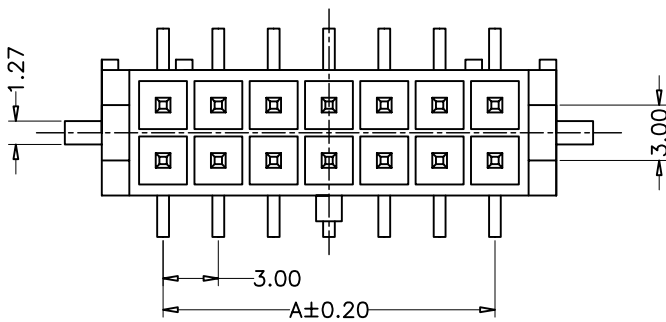
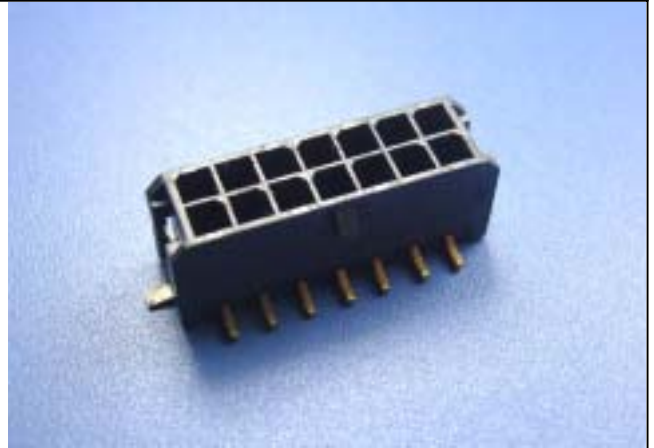


# 3.00mm(0.118") ATX Dual Row SMT

## SPECIFICATIONS

Current Rating: 3 Amp  
 Insulator Resistance: 1000 Megohms min.  
 Dielectric Withstanding: AC 500V  
 Contact Material: Brass  
 Insulator Material: LCP(UL94V-0) ROHS  
 Plated(\*Standard): Plated Over



POLES	DIM:(mm)	
	A	B
2*2	3.00	9.65
2*3	6.00	12.65
2*4	9.00	15.65
2*5	12.00	18.65
2*6	15.00	21.65
2*7	18.00	24.65
2*8	21.00	27.65
2*9	24.00	30.65
2*10	27.00	33.65
2*11	30.00	36.65
2*12	33.00	39.65

How to order the Part No. (Please replace "X" with appropriate coding listed in the tables below.)

ATX	X	X	XX	--	X	XX	--	XX
Connector Pitch	Pin NO	Pin NO			Housing Colour	Contact Plating		Glide NO
F 4.20mm H 3.00mm	W Pole N No Pole	06 to 64			01 Block 02 Blue 03 Green 04 Yellow	01 Tin 02 Gold Flash 03 Gold/Tin		01-99