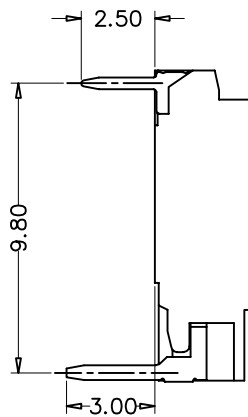
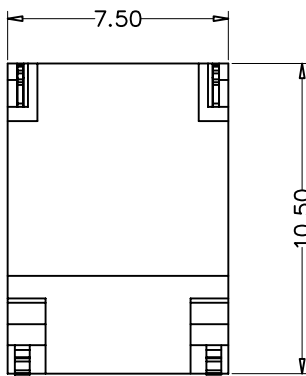
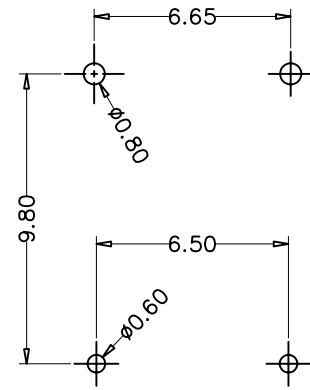
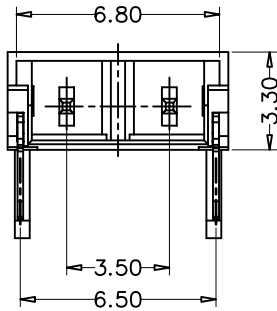
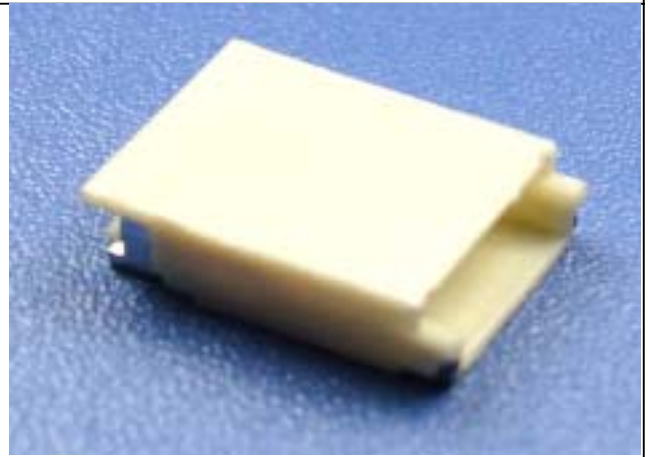


B/H 3.5mm(0.135")Wafer Right Angle DIP 1*2PIN

SPECIFICATIONS

Current Rating: 1A AC, DC
 Temperature Range: -25°C ~ +85°C
 Contact Resistance: 10mΩ Max.
 Insulation Resistance: 1000mΩ min
 Withstanding Voltage: 3800v AC/minute
 Contact Material: Brass
 Contact plating: Tin Plated
 Solder Material: Brass
 Solder plating: Tin-Plated
 Material: Nylon 6T , UL94V-0 ROHS
 Color: Natreal (Beige)



Recommended P.C.B. Layout

How to order the Part No. (Please replace "X" with appropriate coding listed in the tables below.)

W	X
Pitch	
B	0.80mm
C	1.00mm
D	1.25mm
F	2.00mm
G	2.50mm
H	2.54mm
I	3.96mm
K	5.08mm

X	
Versions	
A	180°
B	90°
C	SMT

X	
Row Option	
1	Single Row
2	Dual Row

XX
Pin NO
02 to 20

--	X
Connector Type	
A:	A Type
B:	B Type

XX	
Contact Plating	
01	Tin
02	Gold Flash
03	Gold/Tin

--	XX
Glide NO	
01-99	