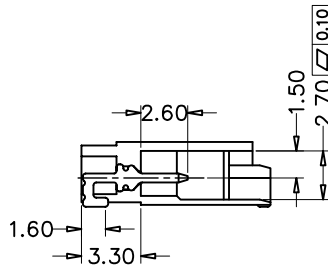
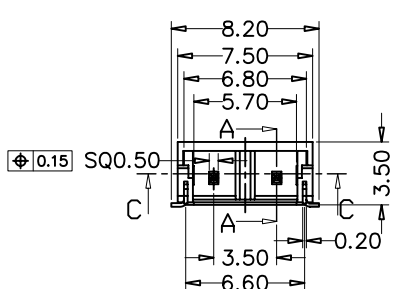
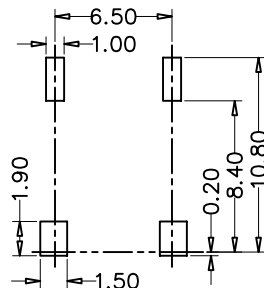
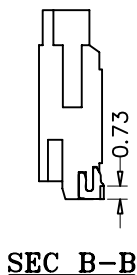
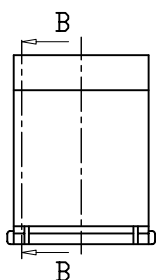
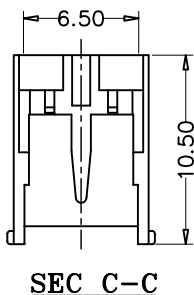


# B/H 3.5mm(0.1378") Wafer Single Row SMT

## SPECIFICATIONS

Current Rating:	1.0 Amp AC/DC
Contact Resistance:	20 megohms Max.
Insulation Resistance:	1000 Megohms min.
Dielectric Withstanding Voltage:	3800V AC/min
Operating Temp. :	-25°C ~ +85°C
Contact Material:	Brass
Plated:	Tin Plated



How to order the Part No. (Please replace "X" with appropriate coding listed in the tables below.)

<b>W</b>	<b>X</b>
Pitch	
B	0.80mm
C	1.00mm
D	1.25mm
F	2.00mm
G	2.50mm
H	2.54mm
I	3.96mm
K	5.08mm

<b>X</b>	
Versions	
A	180°
B	90°
C	SMT

<b>X</b>	
Row Option	
1	Single Row
2	Dual Row

<b>XX</b>	--
Pin NO	
02 to 20	

<b>X</b>	
Connector Type	
A:	A Type
B:	B Type

<b>XX</b>	--
Contact Plating	
01	Tin
02	Gold Flash
03	Gold/Tin

<b>XX</b>	--
Glide NO	
01-99	