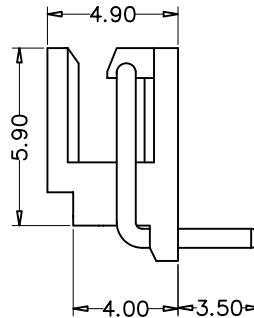
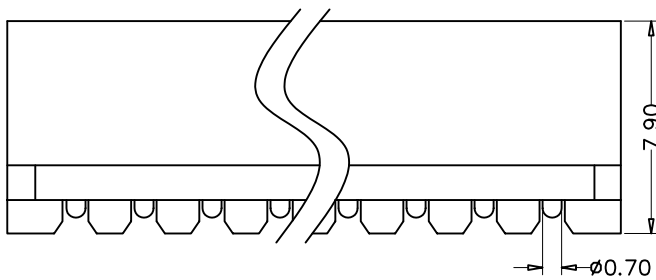
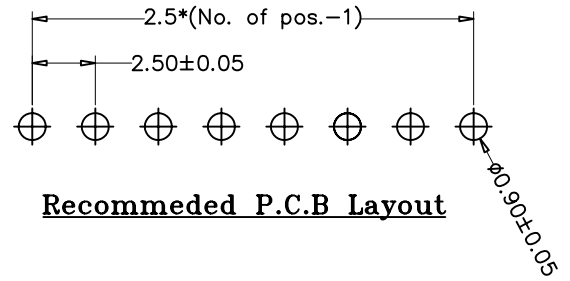
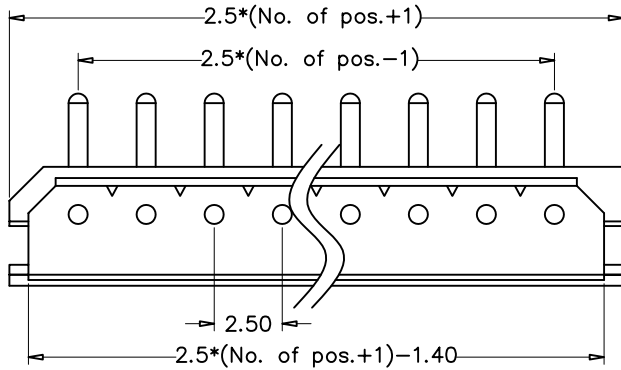
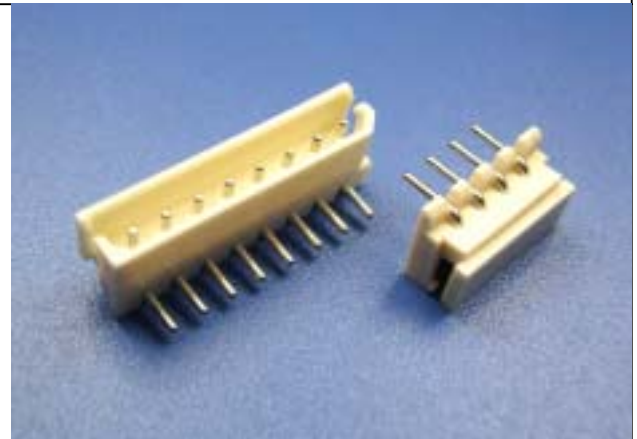


2.5mm(0.1") Wafer Single Row R/A 02 to 16 Contacts

SPECIFICATIONS

Current Rating:	3A AC, DC
Voltage Rating:	250V AC, DC
Dielectric Withstanding:	AC 800VAC/minute
Insulation Resistance:	1000MΩ min
Contact Resistance:	20m Ω max
Temperature Range:	-25° C~+85° C
Material:	PA66 UL 94V-0 ROHS
Contact Material:	BRASS
Plated(*Standard):	Tin Plated



How to order the Part No. (Please replace "X" with appropriate coding listed in the tables below.)

W	X		X		X		XX	--	X		XX	--	XX						
Pitch B 0.80mm C 1.00mm D 1.25mm F 2.00mm G 2.50mm H 2.54mm I 3.96mm K 5.08mm			Versions A 180° B 90° C SMT			Row Option 1 Single Row 2 Dual Row			Pin NO 02 to 20			Connector Type A: A Type B: B Type			Contact Plating 01 Tin 02 Gold Flash 03 Gold/Tin			Glide NO 01-99	