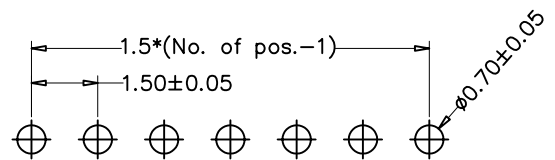
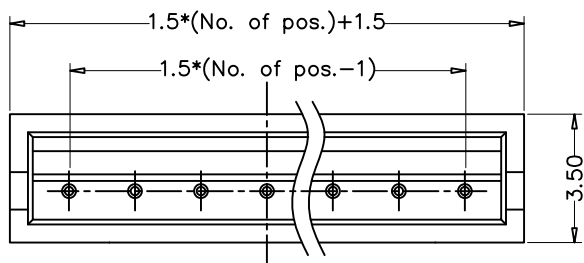
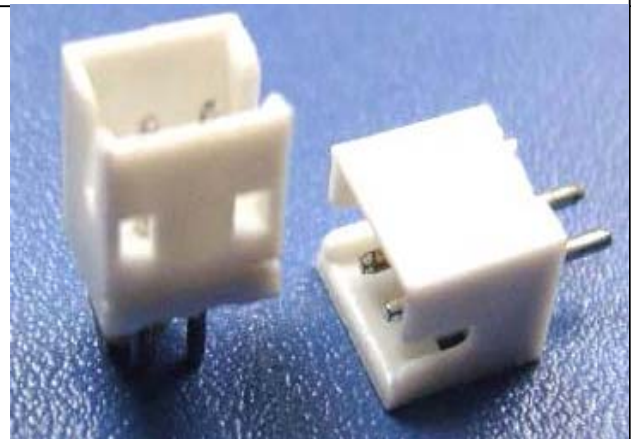


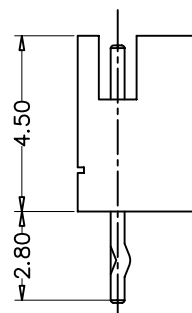
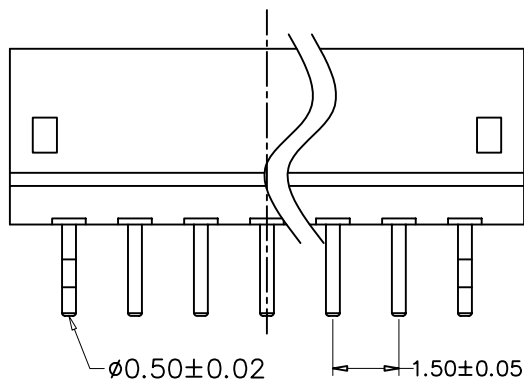
1.5mm(0.059") Wafer Single Row Straight 02 to 13 Contacts

SPECIFICATIONS

Current Rating:	1 Amp
Voltage Rating:	AC 100V
Insulator Resistance:	1000 Megohms min.
Withstand Voltage:	AC 800V min.
Operating Temp. :	-25° C~+85° C
Insulator Material:	PA-66(UL94V-0) ROHS
Contact Material:	Brass
Plated(*Standard):	Tin Plated



Recommended P.C.B Layout



How to order the Part No. (Please replace "X" with appropriate coding listed in the tables below.)

W	X		X		X		XX	--	X		XX	--	XX						
Pitch B 0.80mm C 1.00mm D 1.25mm F 2.00mm G 2.50mm H 2.54mm I 3.96mm K 5.08mm			Versions A 180° B 90° C SMT			Row Option 1 Single Row 2 Dual Row			Pin NO 02 to 20			Connector Type A: A Type B: B Type			Contact Plating 01 Tin 02 Gold Flash 03 Gold/Tin			Glide NO 01-99	