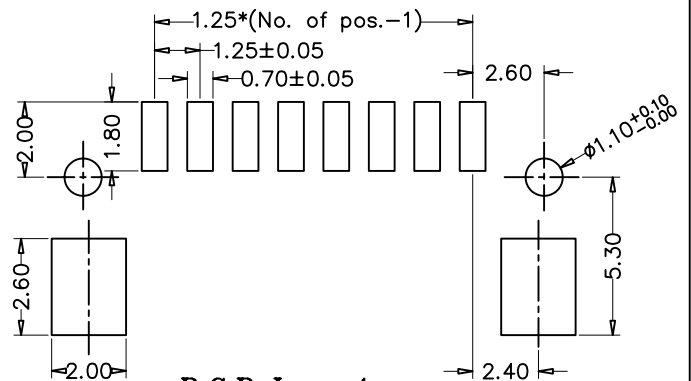
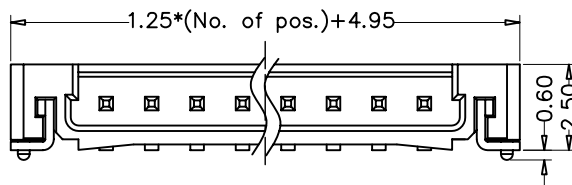
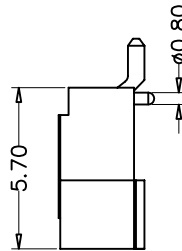
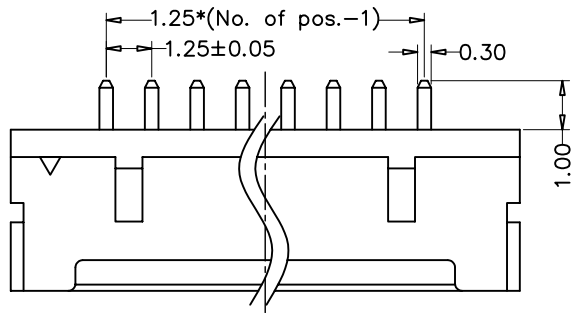
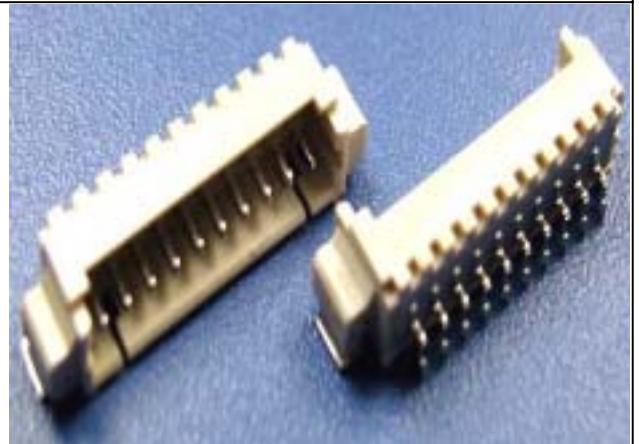


1.25mm(0.0492")Wafer Single Row SMT R/A Type 02 to 30 Contacts

SPECIFICATIONS

Current Rating: 1 Amp
 Insulator Resistance: 300 Megohms min.
 Dielectric Withstanding: AC 500V min.
 Contact Resistance: 20 Ω megohms Max.
 Operating Temp.: -25°C ~ +85°C
 Insulator Material: NY-6T(UL94V-0) ROHS
 Contact Material: Brass
 Plated(*Standard): Tin Plated



P.C.B Layout

How to order the Part No. (Please replace "X" with appropriate coding listed in the tables below.)

W	X	X	X	XX	--	X	XX	--	XX				
Pitch		Versions		Row Option		Pin NO		Connector Type		Contact Plating		Glide NO	
B	0.80mm	A	180°	1	Single Row	02 to 20	A:	A Type				01-99	
C	1.00mm	B	90°	2	Dual Row		B:	B Type					
D	1.25mm	C	SMT										
F	2.00mm												
G	2.50mm												
H	2.54mm												
I	3.96mm												
K	5.08mm												