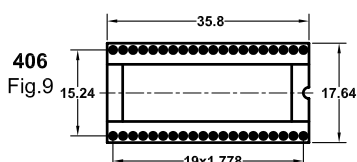
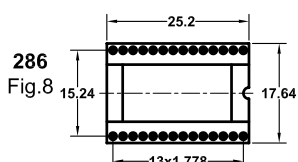
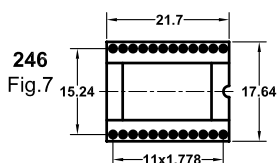
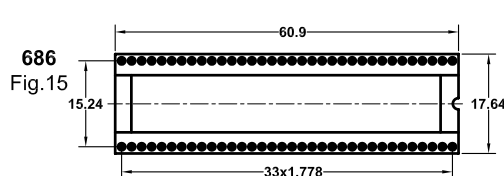
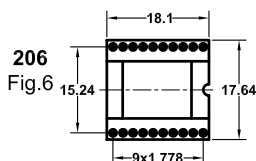
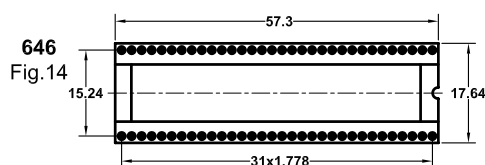
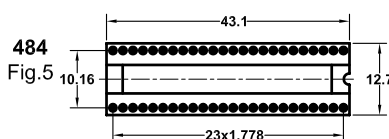
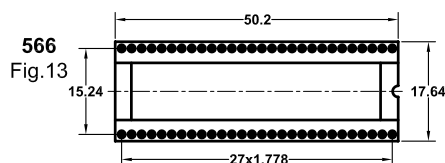
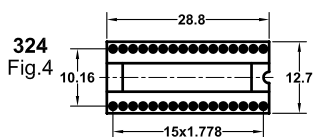
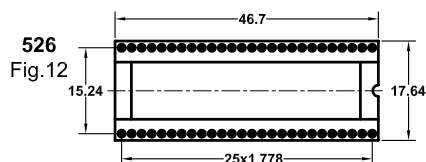
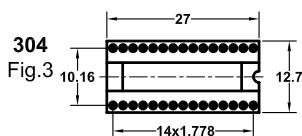
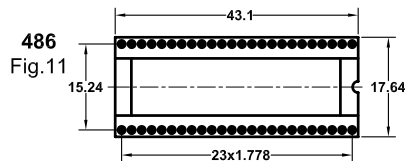
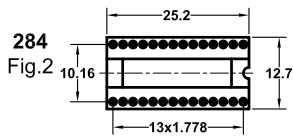
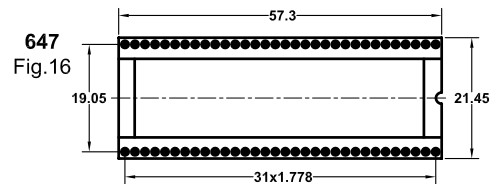
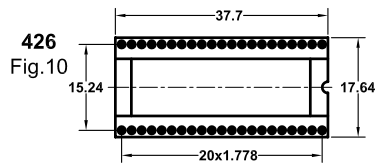
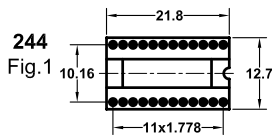


# Dual-in-line sockets 1.778mm

Insulator bodies

Shrinkdip, Open frame



## Ordering information

SAA - NNN X - A P P 0740A

No. of Positions	Row spacing code	Pin Plating code	Clip Plating code
4	10.16mm	1 Tin150 $\mu$ "	1 Tin150 $\mu$ "
6	15.24mm	2 Tin200 $\mu$ "	2 Tin200 $\mu$ "
7	19.05mm	3 GF	3 GF
		4 Gold2 $\mu$ "	4 Gold2 $\mu$ "
		5 Gold3 $\mu$ "	5 Gold3 $\mu$ "
		6 Gold10 $\mu$ "	6 Gold10 $\mu$ "
		7 Gold15 $\mu$ "	7 Gold15 $\mu$ "
		S Special	S Special